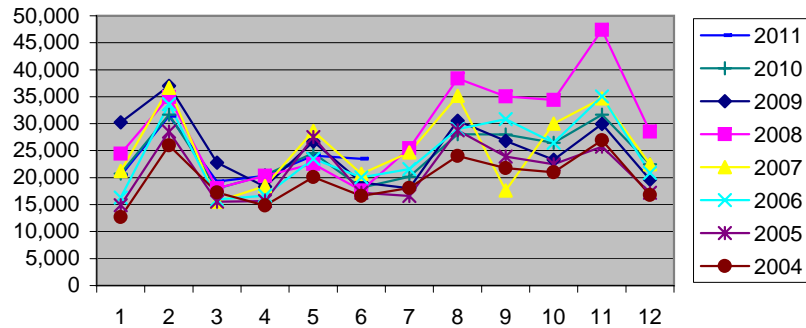


SALES TAX REVENUE HISTORY

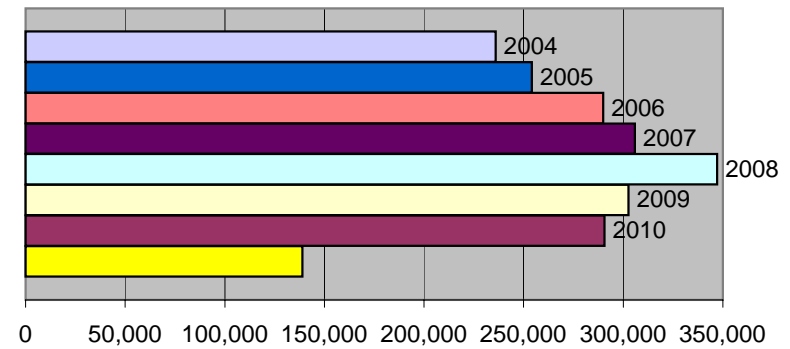
2011

Year	JAN	FEB	MARCH	APRIL	MAY	JUNE	JULY	AUG	SEPT	OCT	NOV	DEC	TOTAL
2011	20,363	31,415	19,255	20,322	24,071	23,496							138,922
2010	20,779	31,700	17,997	20,480	24,565	18,121	20,188	28,070	28,021	26,479	31,661	22,502	290,563
2009	30,256	37,021	22,803	18,324	26,681	19,106	18,051	30,548	26,832	23,325	29,948	19,651	302,546
2008	24,414	34,959	18,018	20,372	22,521	17,597	25,449	38,383	35,057	34,391	47,405	28,509	347,075
2007	21,259	36,682	15,539	18,427	28,621	20,673	24,692	35,151	17,588	30,004	34,720	22,463	305,819
2006	16,336	33,652	15,942	16,657	23,478	20,065	21,583	29,012	30,853	26,459	35,054	20,886	289,977
2005	14,902	28,505	15,523	15,631	27,522	17,223	16,623	28,787	23,901	22,487	25,733	17,225	254,062
2004	12,695	25,980	17,270	14,804	20,108	16,583	18,087	23,996	21,774	20,999	26,923	16,792	236,011

Monthly Revenue History



Yearly Totals



08
0