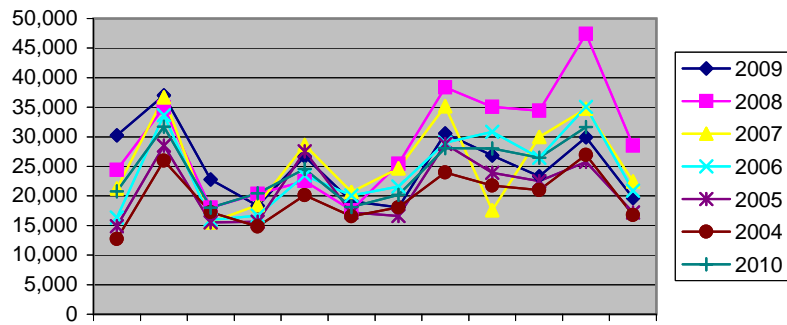


**CITY OF LANGLEY  
SALES TAX REVENUE HISTORY  
2010**

| Year        | JAN    | FEB    | MARCH  | APRIL  | MAY    | JUNE   | JULY   | AUG    | SEPT   | OCT    | NOV    | DEC    | TOTAL          |
|-------------|--------|--------|--------|--------|--------|--------|--------|--------|--------|--------|--------|--------|----------------|
| <b>2010</b> | 20,779 | 31,700 | 17,997 | 20,480 | 24,565 | 18,121 | 20,188 | 28,070 | 28,021 | 26,479 | 31,661 |        | <b>268,061</b> |
| <b>2009</b> | 30,256 | 37,021 | 22,803 | 18,324 | 26,681 | 19,106 | 18,051 | 30,548 | 26,832 | 23,325 | 29,948 | 19,651 | <b>302,546</b> |
| <b>2008</b> | 24,414 | 34,959 | 18,018 | 20,372 | 22,521 | 17,597 | 25,449 | 38,383 | 35,057 | 34,391 | 47,405 | 28,509 | <b>347,075</b> |
| <b>2007</b> | 21,259 | 36,682 | 15,539 | 18,427 | 28,621 | 20,673 | 24,692 | 35,151 | 17,588 | 30,004 | 34,720 | 22,463 | <b>305,819</b> |
| <b>2006</b> | 16,336 | 33,652 | 15,942 | 16,657 | 23,478 | 20,065 | 21,583 | 29,012 | 30,853 | 26,459 | 35,054 | 20,886 | <b>289,977</b> |
| <b>2005</b> | 14,902 | 28,505 | 15,523 | 15,631 | 27,522 | 17,223 | 16,623 | 28,787 | 23,901 | 22,487 | 25,733 | 17,225 | <b>254,062</b> |
| <b>2004</b> | 12,695 | 25,980 | 17,270 | 14,804 | 20,108 | 16,583 | 18,087 | 23,996 | 21,774 | 20,999 | 26,923 | 16,792 | <b>236,011</b> |
| <b>2003</b> | 15,445 | 28,054 | 15,502 | 12,860 | 20,243 | 13,905 | 17,229 | 24,554 | 20,007 | 19,196 | 22,602 | 15,316 | <b>224,913</b> |

**Monthly Revenue History**



**Yearly Totals**

