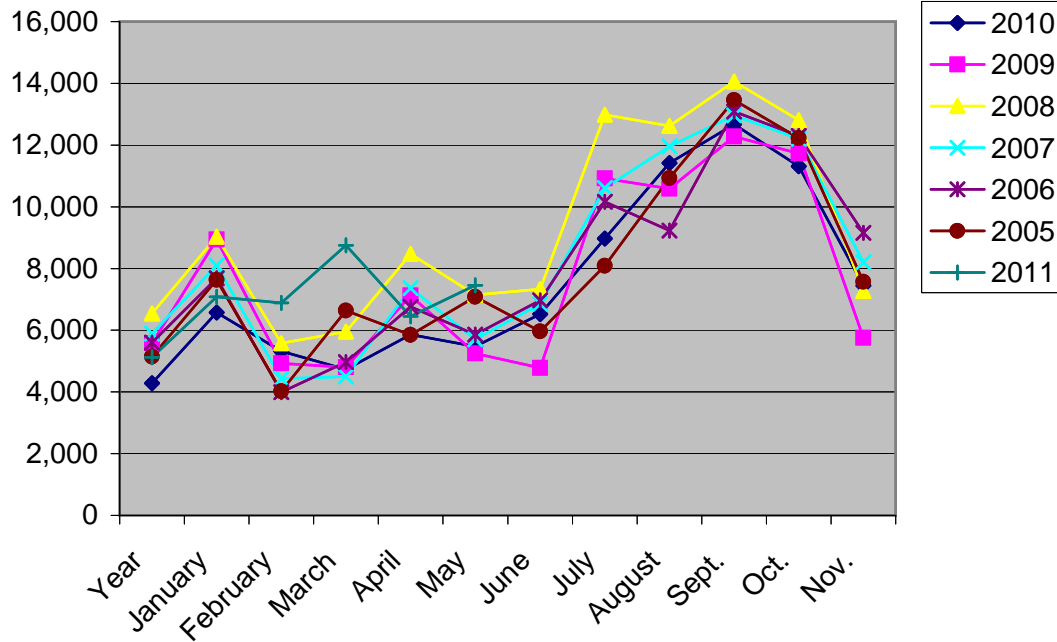


Hotel/Motel Tax History

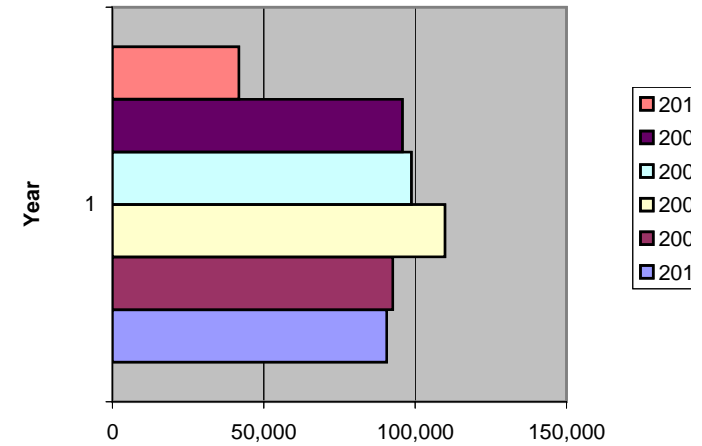
4%

Year	January	February	March	April	May	June	July	August	Sept.	Oct.	Nov.	Dec.
2011	5,121	7,079	6,887	8,754	6,452	7,456						
2010	4,285	6,574	5,324	4,733	5,860	5,480	6,526	8,965	11,420	12,674	11,317	7,443
2009	5,577	8,935	4,922	4,798	7,122	5,242	4,776	10,923	10,592	12,281	11,726	5,756
2008	6,541	9,029	5,574	5,957	8,469	7,142	7,329	12,982	12,619	14,062	12,811	7,273
2007	5,891	8,097	4,432	4,498	7,360	5,705	6,849	10,612	11,955	12,964	12,207	8,203
2006	5,597	7,682	3,995	4,970	6,765	5,858	6,966	10,158	9,233	13,086	12,301	9,160
2005	5,147	7,632	4,023	6,639	5,851	7,082	5,958	8,083	10,930	13,456	12,230	7,573

Monthly Revenues



Yearly Totals



TOTAL
41,749
90,601
92,650
109,788
98,773
95,771
94,604

