

**CITY OF LANGLEY, WASHINGTON  
ORDINANCE NO. \_\_\_\_**

**AN ORDINANCE of the City of Langley, Washington amending the 2010 Annual City Operating Budget.**

**WHEREAS**, the City of Langley passed Ordinance No. 928 (12-21-09) Adopting a budget pursuant to State Statute for the year 2010 based upon estimated revenues and amounts of moneys required to meet the public expenses, bond retirement and interest, reserve and construction funds and expenses of City government; and

**WHEREAS**, the City of Langley has made changes in the fiscal priorities for 2010 that were unanticipated at the time the 2010 budget was adopted;

**NOW, THEREFORE, THE CITY COUNCIL OF THE CITY OF LANGLEY, WASHINGTON, DO HEREBY ORDAIN AS FOLLOWS:**

Section 1. Estimated resources, including fund balances or working capital for the General Fund, and the Cemetery Fund as contained in Ordinance No. 928 and the 2010 City Budget are hereby amended and appropriated for expenditure at the fund level during 2010 as set forth below:

001 General Government	\$1,357,057	1,383,881
101 Street/Stormwater	633,654	
102 Langley Park Fund	11,580	
104 Cemetery Fund	<del>9,441</del>	24,314
105 Tourism Fund	132,349	
201 City Hall/Lib Bond Fund	34,152	
303 Capital Reserves	701,873	
401 Water Fund	498,796	
402 Sewer Fund	429,470	
403 Stormwater Fund	149,028	
408 Sewer Expansion & Improvement	422,365	
625 Scott Memorial Fund	3,224	
<b>Total Budget</b>	<b><del>\$4,382,989</del></b>	<b>4,424,686</b>

Section 2. Severability. If any section, paragraph, subsection, clause or phrase of this ordinance is held invalid for any reason, such decision shall not affect the validity of the remaining portions of this ordinance.

Section 3. Effective Date. This Ordinance shall be in full force and effect five (5) days after publication and posting of an approved summary thereof, consisting of the title.

PASSED BY THE CITY COUNCIL OF THE CITY OF LANGLEY, WASHINGTON, and approved by the Mayor this 18<sup>th</sup> day of January, 2011.

\_\_\_\_\_  
PAUL SAMUELSON, MAYOR

ATTEST:

\_\_\_\_\_  
DEBBIE L. MAHLER, DIRECTOR OF FINANCE/CLERK

APPROVED AS TO FORM:

\_\_\_\_\_  
GRANT K. WEED, CITY ATTORNEY

Published S. Whidbey Record: \_\_\_\_\_

**2010 BUDGET**

<b>GENERAL FUND 001</b>	<b>2009</b>	<b>2009</b>	<b>2010</b>	<b>2010</b>
	<b>BUDGET</b>	<b>ACTUAL</b>	<b>BUDGET</b>	<b>AMENDED</b>
<b>REVENUE</b>				
<b>BEG. FUND BALANCE</b>	102,795	102,795	1,500	1,031
<b>BEG RESERVE BALANCE</b>	61,433	61,433		
<b>TOTAL CASH &amp; INVESTMENT BAL</b>	<b>164,228</b>	<b>164,228</b>	<b>1,500</b>	<b>1,031</b>
<b>TAXES</b>				
PROPERTY TAX	350,715	350,715	369,182	368,952
SALES TAX	302,547	302,548	303,725	290,563
SALES TAX/CRIM. JUST. FUNDS	9,672	9,672	9,309	
UTILITY TAX - ELECTRIC	65,109	65,109	68,067	
UTILITY TAX - SOLID WASTE	12,023	12,023	10,521	
UTILITY TAX - CABLE TV	18,005	18,005	17,996	
UTILITY TAX - PHONE	30,429	30,429	31,596	
UTILITY TAX - CITY UTILITIES	38,431	38,431	39,419	
LEASEHOLD EXCISE TAX	245	245		
REAL ESTATE EXCISE TAXES	20,475	20,476	20,984	15,830
<b>TOTAL TAXES</b>	<b>847,651</b>	<b>847,653</b>	<b>870,799</b>	<b>852,253</b>
<b>LICENSES &amp; PERMITS</b>				
FRANCHISE FEES - CABLE TV	15,004	15,004	15,932	
BUSINESS LICENSES/PERMITS	17,532	17,533	21,250	
TEMP. & CONTRACT. BUS. LICENSES	3,730	3,730	6,500	
BUILDING PERMITS	26,388	26,388	25,768	
ANIMAL LICENSES	127	127	140	
NON-BUSINESS LICENSES/PERMITS	810	810	900	
<b>TOTAL LICENSES &amp; PERMITS</b>	<b>63,591</b>	<b>63,592</b>	<b>70,490</b>	<b>70,490</b>
<b>INTERGOVERNMENTAL REVENUE</b>				
STATE ARCHIVES GRANT	11,663	11,663	0	
ENERGY GRANT	5,000	5,000	0	
EMERGENCY PLANNING/SHORELINE GRANT		0	10,000	
CRIMINAL JUST TRAINING GRANT		0	0	
EQUIPMENT GRANT/LPD	0	0	0	
STATE GROWTH MANAGEMENT	15,000	15,000	0	
STATE DEPT OF ARCHEOLOGY GRANT			9,000	
COUNTY MATCHING GRANT			6,000	
CRIM. JUSTICE HIGH CRIME	1,311	1,311		
CRIM. JUSTICE FUNDS/POPULATION	1,000	1,000	1,000	
CRIM. JUSTICE FUNDS/PROG.AREA1-3	889	889	891	
DUI/OTHER CRIM. JUSTICE ASST	353	353	241	
LIQUOR EXCISE	5,278	5,278	5,258	
LIQUOR PROFITS	7,431	7,431	9,053	
IN LIEU PROP. TAXES/BROOKHAVEN	1,675	1,675	1,675	
CLEAN AIR AGENCY GRANT	400	400	0	
<b>TOTAL INTERGOVERNMENTAL REV.</b>	<b>50,000</b>	<b>50,000</b>	<b>43,118</b>	<b>43,118</b>
<b>CHARGES FOR GOODS AND SERVICES</b>				
PSE ACCOUNTING SERVICES	4,800	4,800	4,800	5,170
PASSPORT SERVICES	10,060	10,060	12,025	6,700
COPIES/DUPLICATING/FAX	34	34	100	

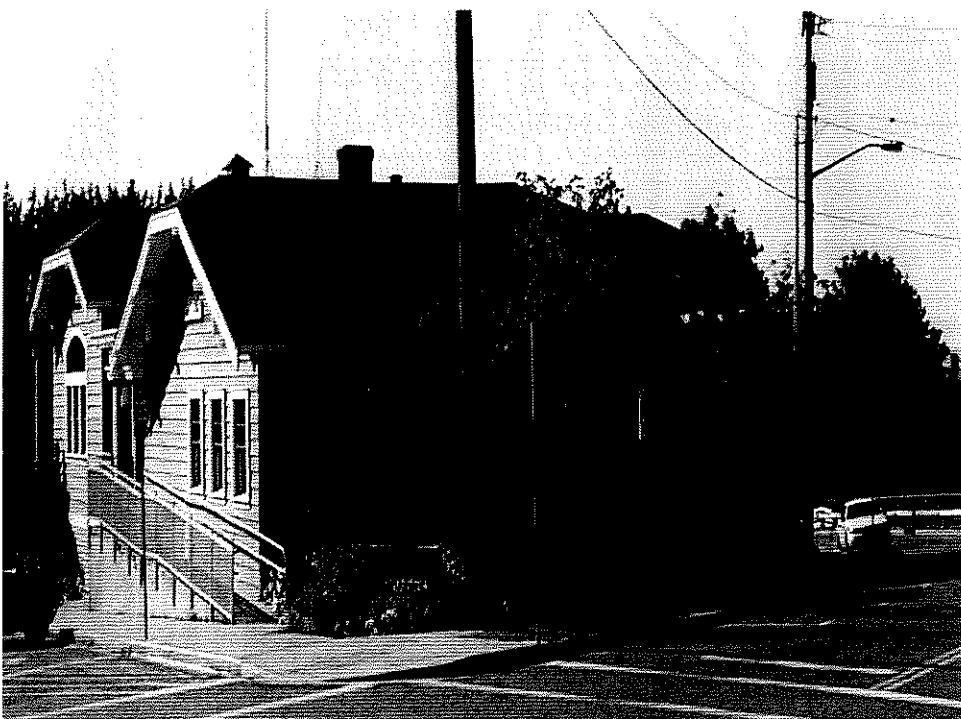
<b>GENERAL FUND 001</b>	<b>2009</b>	<b>2009</b>	<b>2010</b>	<b>2010</b>
	<b>BUDGET</b>	<b>ACTUAL</b>	<b>BUDGET</b>	<b>AMENDED</b>
REIMBURSED PROFESSIONAL FEES	0	0	0	
LAW ENFORCEMENT SERVICES	125	125	100	
PLANNING/DEVELOP. FEES & CHRGS.	17,965	17,965	30,000	9,800
ZONING AND SUBDIVISION FEES	720	720	1,500	
PLAN CHECKING FEES	18,838	18,838	12,265	11,400
<b>TOTAL CHARGES FOR SERVICES</b>	<b>52,542</b>	<b>52,542</b>	<b>60,790</b>	<b>34,770</b>
<b>FINES &amp; FORFEITS</b>				
TRAFFIC INFRACTIONS	4,645	4,645	6,355	4,265
NON-TRAFFIC INFRACTIONS	26	26	120	40
PARKING	318	318	600	
D.U.I.	1,620	1,620	1,100	1,800
CRIMINAL TRAFFIC	2,818	2,818	2,760	2,000
NON-TRAFFIC CRIMINAL	40	0	40	
INTEREST/MUNICIPAL COURT	54	54	40	0
<b>TOTAL FINES &amp; FORFEITS</b>	<b>9,521</b>	<b>9,481</b>	<b>11,015</b>	<b>8,745</b>
<b>MISCELLANEOUS REVENUES</b>				
MISC. REVENUES	785	785	600	
INTEREST EARNED	1,406	1,406	2,200	
VIC RENT	6,750	6,750	8,100	
SALE OF SCRAP/JUNK	0	0	30	
DONATIONS	2,083	2,083	300	
FIRE HALL RENT	12,436	12,436	31,644	
EMPLOYEE BENEFIT CONTRIBUTIONS	9,768	9,768	9,899	
NSF FEES	60	60	60	
<b>TOTAL MISCELLANEOUS REVENUES</b>	<b>33,288</b>	<b>33,288</b>	<b>52,833</b>	<b>52,833</b>
<b>NON-REVENUES</b>				
INTERFUND LOAN FROM 303				73,000
SURETY /REFUNDS	1,513	1,513		1,129
<b>TOTAL NON-REVENUES</b>	<b>1,513</b>	<b>1,513</b>	<b>0</b>	<b>74,129</b>
<b>OTHER FINANCING SOURCES</b>				
OPERATING TRNSFR - WATER	75,425	75,425	76,008	
OPERATING TRNSFR - SEWER	76,404	76,404	83,725	
OPERATING TRNSFR - STREETS	52,057	52,057	53,493	
OPERATING TRNSFR - HARBOR	389	389	0	
OPERATING TRNSFR - STORMWATER	0	0	28,286	
TRANSFER IN FROM TOURISM	5,000	5,000	5,000	
TRNSFR IN FROM 303/206	5,763	5,763	0	
TRANSFER IN FROM STREETS (bldg permit)	742	742		
<b>TOTAL OTHER FINAN. SOURCES</b>	<b>215,780</b>	<b>215,780</b>	<b>246,512</b>	<b>246,512</b>
<b>GRAND TOTAL GEN. GOV</b>	<b>1,438,114</b>	<b>1,438,077</b>	<b>1,357,057</b>	<b>1,383,881</b>
<b>GENERAL FUND 001</b>				
<b>EXPENDITURES</b>	<b>2009</b>	<b>2009</b>	<b>2010</b>	<b>2011</b>
	<b>BUDGET</b>	<b>YTD</b>	<b>BUDGET</b>	<b>AMENDED</b>
<b>LEGISLATIVE</b>				
COUNCIL TRAINING	250	250	1,000	0
COUNCIL PAY	2,950	2,950	3,000	

<b>GENERAL FUND 001</b>	<b>2009</b>	<b>2009</b>	<b>2010</b>	<b>2010</b>
	<b>BUDGET</b>	<b>ACTUAL</b>	<b>BUDGET</b>	<b>AMENDED</b>
ELECTION COSTS	100	-40	380	
VOTER REGISTRATION	1,212	1,213	1,280	
<b>TOTAL LEGISLATIVE</b>	<b>4,512</b>	<b>4,373</b>	<b>5,660</b>	<b>4,660</b>
<b>EXECUTIVE</b>				
MAYOR SALARY	55,695	55,695	50,855	
BENEFITS	15,192	15,192	17,768	
ADMINISTRATOR SALARY	0	0	0	
SPECIAL ASSISTANT TO THE MAYOR	32,838	32,838	31,194	
SUPPLIES	200	180	400	
TELEPHONE/ MISC.		0	100	
EMERGENCY PLANNING	0	0	0	
TRAINING/TRAVEL/EXPENSES	4,225	4,225	2,000	
<b>TOTAL EXECUTIVE</b>	<b>108,150</b>	<b>108,130</b>	<b>102,317</b>	<b>102,317</b>
<b>MUNICIPAL COURT</b>				
DISTRICT COURT RENT/EXPENSES	21,713	21,712	23,230	21,675
JUDGES SERVICES	142	142		400
SUPPLIES/PROSECUTOR	4,269	4,268	5,500	3,880
PUBLIC DEFENDER	1,200	1,200	1,200	600
<b>TOTAL MUNICIPAL COURT</b>	<b>27,324</b>	<b>27,322</b>	<b>29,930</b>	<b>26,555</b>
<b>FINANCE &amp; RECORDS</b>				
WAGES	207,975	207,972	174,083	166,000
BENEFITS	69,642	69,642	63,826	55,000
COPIER & EQUIP M & R	1,075	1,075	900	
AUDIT	21,776	21,776	0	
TRAINING/TRAVEL	1,797	1,796	0	
MISC.	702	701	350	550
STATE ARCHIVES GRANT EXPENSES	6,536	6,536	0	
<b>TOTAL FINANCE &amp; RECORDS</b>	<b>309,503</b>	<b>309,498</b>	<b>239,159</b>	<b>222,450</b>
<b>LEGAL SERVICES</b>				
ATTORNEY - ADMINISTRATION	12,820	12,814	12,108	60,205
<b>TOTAL LEGAL</b>	<b>12,820</b>	<b>12,814</b>	<b>12,108</b>	<b>60,205</b>
<b>GENERAL GOVT</b>				
FINANCIAL & BILLING SOFTWARE	3,732	3,731	5,000	5,813
ASSOCIATION DUES	1,922	1,922	1,850	1,000
POSTAGE	2,042	2,042	2,500	2,600
COPIER LEASE	7,545	7,543	6,586	8,033
INSURANCE	53,890	53,890	59,114	
UTILITIES	12,775	12,775	8,893	7,400
MISC.	50	19	300	150
PUBLICATIONS/LEGALS	2,975	2,974	4,600	3,550
OFFICE SUPPLIES	6,486	6,485	7,000	4,500
TELEPHONE/INTERNET	7,915	7,912	7,896	8,085
JANITORIAL SERVICE	6,325	6,325	0	
NEW EQUIPMENT	0	0	2,000	300
<b>TOTAL GENERAL GOVT</b>	<b>105,657</b>	<b>105,618</b>	<b>105,739</b>	<b>100,545</b>

<b>GENERAL FUND 001</b>	<b>2009</b>	<b>2009</b>	<b>2010</b>	<b>2010</b>
	<b>BUDGET</b>	<b>ACTUAL</b>	<b>BUDGET</b>	<b>AMENDED</b>
<b>CIVIL SERVICE</b>				
SUPPLIES	100	0	100	
TRAINING	50	250	0	
ADVERTISING/EXAM/LEGAL	100	0	100	
<b>TOTAL CIVIL SERVICE</b>	<b>250</b>	<b>250</b>	<b>200</b>	<b>200</b>
<b>LAW ENFORCEMENT</b>				
PHONE	2,663	2,661	2,700	
WAGES	239,502	238,701	237,543	
OVERTIME	8,532	8,532	7,000	
BENEFITS	81,693	81,693	87,817	
UNIFORMS	490	490	1,500	
SUPPLIES & PRINTING	1,350	1,351	1,000	
MISC.	250	0	250	
TRAINING & TRAVEL	899	899	1,200	
FUEL & MAINTENANCE	8,737	8,736	10,000	
RESERVE WAGES	9,450	9,413	5,500	
RESERVE BENEFITS	1,075	1,075	660	
EQUIPMENT	2,826	2,825	1,800	
EQUIPMENT GRANT EXPENDITURES	0	0	0	12,235
TRNSFR OUT TO EQUIP RESERVE	0	0	2,500	
<b>TOTAL POLICE</b>	<b>357,467</b>	<b>356,376</b>	<b>359,470</b>	<b>371,705</b>
<b>EMERGENCY SERVICES</b>				
EMERGENCY PLANNING	16,441	16,441	0	2,140
OPERATIONS CENTER EQUIPMENT	0	0	0	
<b>TOTAL EMERGENCY SERVICES</b>	<b>16,441</b>	<b>16,441</b>	<b>0</b>	<b>2,140</b>
<b>COMMUNICATIONS/DISPATCH</b>				
SPILLMAN LINE/SPRINT DATA LINE	2,526	2,526	2,466	2,640
PAGER CONTRACT	564	564	584	
RADIO CONTRACT	0	0	0	
OTHER SERVICES - LERN	750	750	750	
DISPATCH SERVICE (ICOM)	15,452	15,452	15,910	20,510
<b>TOTAL COMMUNICATIONS</b>	<b>19,292</b>	<b>19,292</b>	<b>19,710</b>	<b>24,484</b>
<b>PHYSICAL ENVIRONMENT</b>				
N.W. AIR POLLUTION DUES	371	371	378	
CITY FACILITIES MAINTENANCE	1,653	1,653	1,600	4,800
FACILITIES MAINT. SUPPLIES	3,005	3,003	2,100	
ENERGY CONSERVATION	11,342	11,342	0	
CITY VEHICLE MAINTENANCE	0	0	0	
<b>TOTAL PHYSICAL ENVIRONMENT</b>	<b>16,371</b>	<b>16,369</b>	<b>4,078</b>	<b>7,278</b>
<b>PLANNING/COMMUNITY DEVELOPMENT</b>				
OFFICE SUPPLIES/PUBLICATIONS	0	0	500	200
TELEPHONE	812	811	812	
TRAINING	1,500	1,041	500	50
LAND USE /PLANNER WAGES	128,697	128,626	122,920	
LAND USE/PLANNING BENEFITS	47,844	47,843	49,958	

<b>GENERAL FUND 001</b>	<b>2009</b>	<b>2009</b>	<b>2010</b>	<b>2010</b>
	<b>BUDGET</b>	<b>ACTUAL</b>	<b>BUDGET</b>	<b>AMENDED</b>
PLANNER - CONSULTANT	0	1,400	0	
AFFORDABLE HOUSING STUDY	0	0	0	
MISC./RECORDING SECRETARY	135	131	0	
GROWTH MANAGEMENT/MAILING COSTS	0	0	200	
CONSULTING PLANNER - HISTORICAL GRANT			15,000	
PROFESSIONAL FEES REIMBURSABLE	14,097	14,096	0	17,857
<b>TOTAL PLANNING &amp; COMM. DEV.</b>	<b>193,085</b>	<b>193,948</b>	<b>189,890</b>	<b>206,997</b>
<b>BUILDING INSPECTION/HOUSING</b>				
MISC. OPERATING EXPENSES	180	180	200	
TRAINING/PUBLICATIONS	0	0	400	
INSPECTION/B.O. SERVICES	76,860	76,860	66,070	55,000
<b>TOTAL BUILDING/HOUSING</b>	<b>77,040</b>	<b>77,040</b>	<b>66,670</b>	<b>55,600</b>
<b>MENTAL/PHYSICAL HEALTH</b>				
ISLAND CTY ALCOHOL PROGRAM	256	256	260	
<b>TOTAL MENTAL/PHYSICAL HEALTH</b>	<b>256</b>	<b>256</b>	<b>260</b>	<b>260</b>
<b>LIBRARY</b>				
SNO-ISLE CONTRACT	20,824	20,824	22,273	28,332
LIBRARY JANITOR SERVICES	14,850	14,850	16,200	14,469
UTILITIES	6,500	6,474	7,242	6,500
BLDG. M & R	2,000	2,580	2,000	
TRANSFER OUT TO LIBRARY RESERVE	0	0	2,000	
GARDENING	300	220	650	100
<b>TOTAL LIBRARY</b>	<b>44,474</b>	<b>44,948</b>	<b>50,365</b>	<b>53,401</b>
<b>PARKS</b>				
PARKS WAGES & BENEFITS	35,291	35,291	18,998	14,200
PARKS SUPPLIES	379	379	1,000	700
TREE CUTTING	5,200	5,203	0	
UTILITIES - WASTE DISPOSAL	4,840	4,838	4,500	
OPEN SPACE MAINTENANCE	150	78	0	
PARK IMPROVEMENTS	0	0	0	
LANGLEY BEAUTIFICATION			0	
<b>TOTAL PARKS</b>	<b>45,860</b>	<b>45,789</b>	<b>24,498</b>	<b>19,400</b>
<b>DEBT SERVICE</b>				
TRNSFR TO CHLIB DEBT SERVICE	35,528	35,528	33,928	
<b>TOTAL DEBT SERVICE</b>	<b>35,528</b>	<b>35,528</b>	<b>33,928</b>	<b>33,928</b>
<b>OTHER EXPENDITURES</b>				
DATA BACKUP/STORAGE			0	
COMPUTERS - M & R	1,818	1,818	2,000	500
NETWORK ADMIN/WEBSITE	3,000	3,000	1,600	
ASP SW MAINTENANCE	4,375	4,375	4,375	
EQUIP/FURNITURE/COMPUTERS	4,668	4,668	2,000	0
<b>TOTAL OTHER EXPENSE</b>	<b>13,861</b>	<b>13,861</b>	<b>9,975</b>	<b>6,475</b>
<b>OTHER FINANCING USES</b>				
INTERFUND LOAN REPAYMENT	0		0	15,000

<b>GENERAL FUND 001</b>	<b>2009</b>	<b>2009</b>	<b>2010</b>	<b>2010</b>
	<b>BUDGET</b>	<b>ACTUAL</b>	<b>BUDGET</b>	<b>AMENDED</b>
TRANSFER TO STREET FUND	48,759	48,759	65,012	
TRANSFER OUT	434	434	0	
<b>TOTAL OTHER FINANCING</b>	<b>49,193</b>	<b>49,193</b>	<b>65,012</b>	<b>80,012</b>
<b>TOTAL FUND EXPENDITURE</b>	<b>1,437,084</b>	<b>1,437,046</b>	<b>1,318,969</b>	<b>1,378,612</b>
<b>ENDING RESERVE FUND BALANCE</b>	<b>0</b>	<b>0</b>	<b>0</b>	<b>0</b>
<b>ENDING FUND BALANCE</b>	<b>1,030</b>	<b>1,031</b>	<b>38,088</b>	<b>5,269</b>
<b>GRAND TOTAL GENERAL FUND</b>	<b>1,438,114</b>	<b>1,438,077</b>	<b>1,357,057</b>	<b>1,383,881</b>



<b>CEMETERY FUND 104</b>	<b>2009</b>	<b>2009</b>	<b>2010</b>	<b>2010</b>
	<b>BUDGET</b>	<b>ACTUAL</b>	<b>BUDGET</b>	<b>AMENDED</b>
<b>REVENUE</b>				
<b>BEG. FUND BALANCE</b>	<b>7,725</b>	<b>6,422</b>	<b>1,583</b>	<b>109</b>
% SALE OF PLOTS/RIGHTS	4,680	3,708	5,900	23,928
INTEREST EARNED	150	32	68	32
DONATIONS				
TRANSFER-IN/ENDOWMENT INT	2,324	4774	1,880	240
MISCELLANEOUS REVENUE	20	10	10	5
<b>TOTAL CEMETERY</b>	<b>14,899</b>	<b>14,946</b>	<b>9,441</b>	<b>24,314</b>
<b>EXPENDITURES</b>				
WAGES & BENEFITS	8,554	9,882	7,367	8,910
CONTRACT MAINTENANCE	0	3,050	0	850
UTILITIES	320	514	330	706
IMPROVEMENTS		1,014		180
MISC		133		
REPURCHASE CEMETERY LOTS	225	244	225	900
<b>TOTAL EXPENDITURES</b>	<b>9,099</b>	<b>14,837</b>	<b>7,922</b>	<b>11,546</b>
<b>ENDING FUND BALANCE</b>	<b>5,800</b>	<b>109</b>	<b>1,519</b>	<b>12,768</b>
<b>TOTAL CEMETERY</b>	<b>14,899</b>	<b>14,946</b>	<b>9,441</b>	<b>24,314</b>

